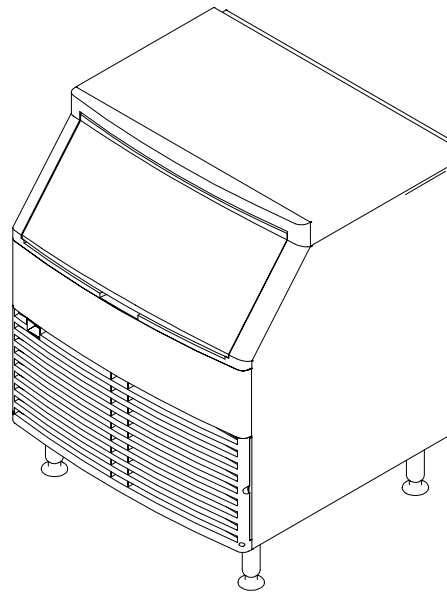




## Q270 Ice Machine

### Parts List

QR0270A  
QR0271W  
QD0272A  
QD0273W  
QY0274A  
QY0275W

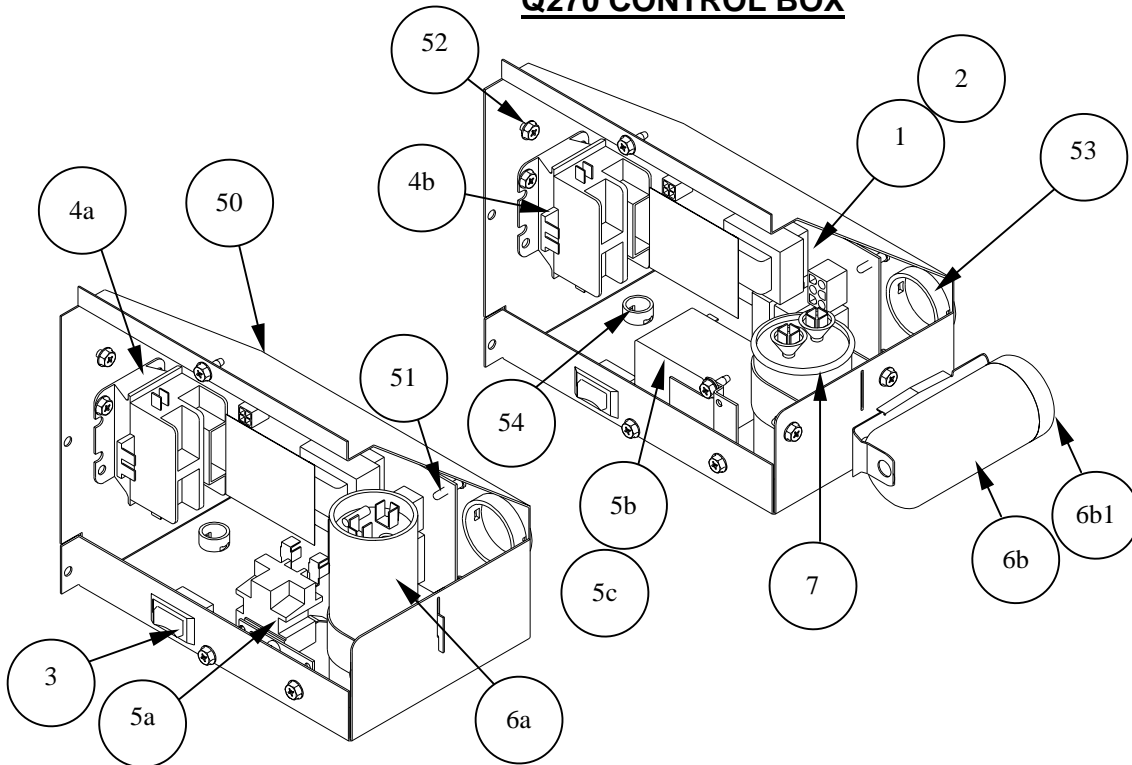


Pt1288

Thank you for selecting a Manitowoc Ice Machine, the dependability leader in ice making equipment and related products. With proper care and maintenance, your new Manitowoc Ice Machine will provide you with many years of reliable and economic performance.

We reserve the right to make product improvements at any time. Specifications and design are subject to change without notice.

## Q270 CONTROL BOX



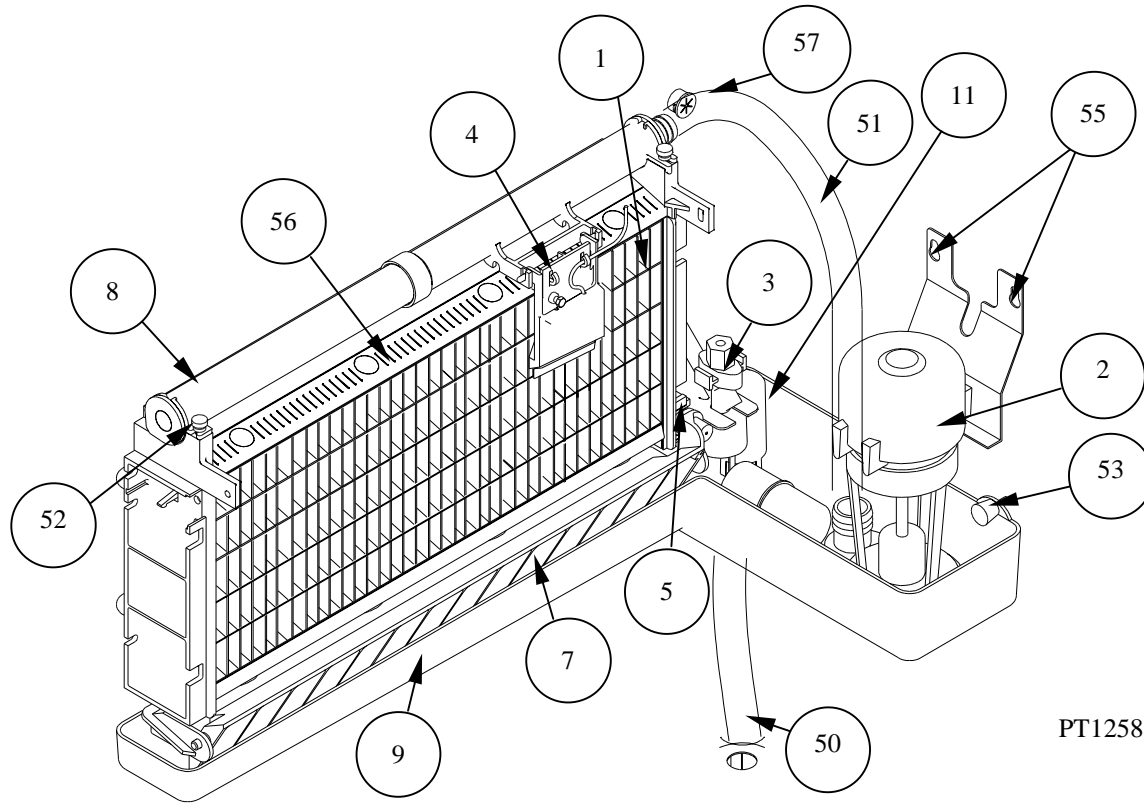
Pt1289

### DESCRIPTION

### PART NUMBER

1	Control Board (for use with all voltages) .....	76-2907-3
2	10 amp Fuse-Mounted on Control Board .....	25-1149-3
3	<b>Toggle Switch only</b> .....	23-0151-3
a.	Wiring Harness Only .....	20-3248-3
4	<b>Contactor</b>	
a.	115v/60Hz/1ph .....	24-1029-3
b.	230v 50-60Hz/1ph .....	24-1028-3
5	<b>Start Relay</b>	
a.	115v/60Hz/1ph .....	85-0374-3
b.	230v 60Hz/1ph .....	85-0455-3
c.	230v 50Hz/1ph .....	85-0448-3
6	<b>Start Capacitor</b>	
a.	115v/60Hz/1ph .....	85-0577-3
b.	230v 50-60Hz/1ph .....	85-0576-3
b1.	Capacitor End Cap .....	85-0579-3
7	<b>Run Capacitor</b> 230v 50-60Hz/1ph .....	85-0400-3
8	<b>Wiring Harness</b>	
a.	Air Cooled 115v/60Hz/1ph (not shown) .....	20-3315-3
a1.	230v/50-60Hz/1ph (not shown) .....	20-3316-3
b.	Water Cooled 115v/60Hz/1ph (not shown) .....	20-3313-3
b1.	230v/50-60Hz/1ph .....	20-3314-3
c.	Ice Thickness Control Probe (wire lead and connectors only) .....	20-3312-3
6.	<b>Power Cord</b>	
a.	125v/60Hz (not shown) .....	20-3301-3
b.	230v/60Hz (not shown) .....	20-3303-3
c.	230v/50Hz (not shown) .....	20-3302-3
	<b>Miscellaneous - Brackets, Screws, etc.</b>	
50.	Control Box .....	603461-1
51.	Control Board Mounting Supports .....	43-0225-3
52.	Screw, #10-24 x .50 Ground .....	52-0216-9
53.	Bushing .....	25-0013-9
54.	Bushing .....	25-0218-9

## Q270 EVAPORATOR COMPARTMENT

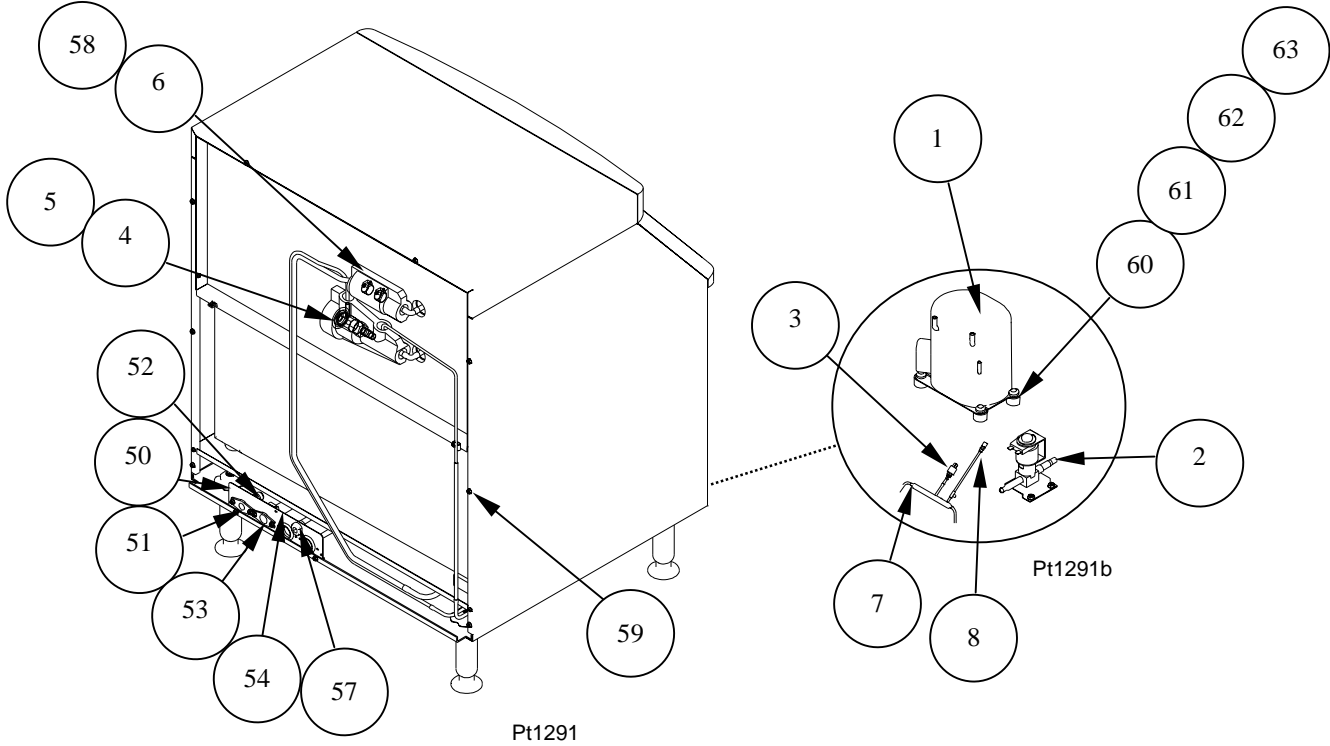


### DESCRIPTION

### PART NUMBER

1	<b>Evaporator Assembly</b>	
a.	Regular Cube .....	76-2954-9
b.	Dice Cube .....	76-2955-9
c.	Half Dice Cube .....	76-2956-9
2	<b>Water Pump</b>	
a.	115v/60Hz .....	76-2306-3
b.	208-230v/60Hz or 230v/50Hz .....	76-2601-3
3.	<b>Float Valve (Complete Assembly)</b> .....	83-6904-9
a	Float Valve Screen .....	83-6906-9
b	Float Valve plunger .....	83-6908-9
c	Float Valve Compression nut .....	56-5072-9
4	Ice Thickness Control Probe .....	25-1147-3
5	Magnetic Bin Switch (Mounted to Evaporator) .....	23-0160-3
6	Water Flow Clamp (not shown, used on regular cube only) .....	76-2054-3
7	Ice Damper .....	76-0048-3
a.	Ice Damper Magnet and cap .....	76-2909-3
8	Water Distribution Tube .....	76-2498-3
9	Water Trough .....	43-0386-3
10	Water Inlet Tubing (not shown) .....	44-2029-1
11.	Siphon Cap .....	43-0222-3
	<b>Miscellaneous - Brackets, Screws, etc.</b>	
50	Drain tube .....	440013-3
51.	Tubing (Water Pump Out) .....	44-2142-3
52.	Screw, #8-32 x .63 Nylon Water Distribution Tube Mounting .....	50-0001-3
53.	Thumbscrew, #8-32 x .625 .....	53-0510-3
54.	Screw, #10-24 x .750 Used to Mount Evaporator (not shown) .....	52-0218-9
55.	Screw, #10-24 x .50 .....	52-0206-9
56.	Evaporator Top Molding and Gasket Assembly .....	76-2621-3
57.	Bushing (Ice Thickness Probe Wire) .....	25-0016-9

## Q270 REFRIGERATION COMPARTMENT - COMMON PARTS

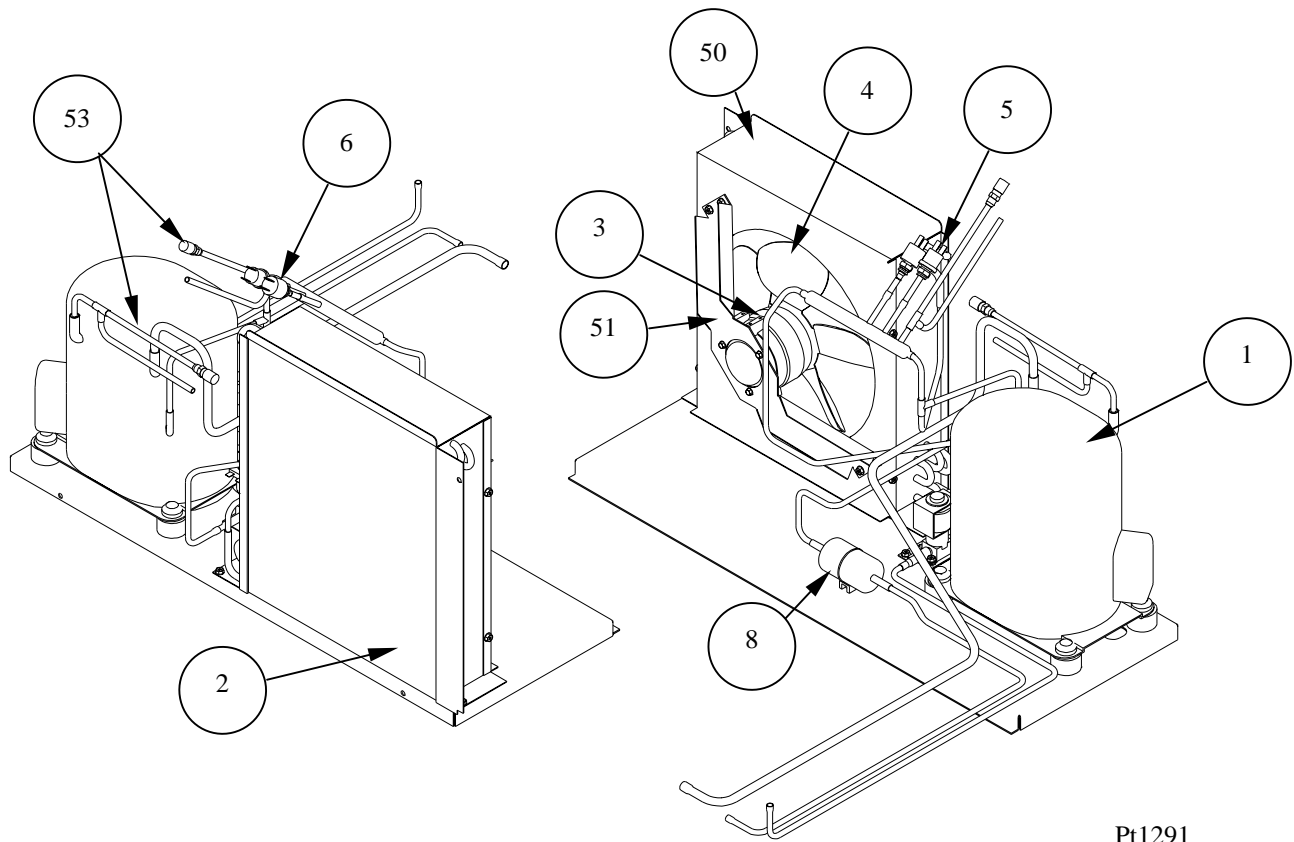


### DESCRIPTION

### PART NUMBER

1	<b>Compressor</b>	
a.	115v/60Hz/1ph .....	76-2936-3
a1.	Overload for compressor .....	85-0573-3
b.	208-230v/60Hz/1ph .....	76-2937-3
b1.	Overload for compressor .....	85-0574-3
c.	224-240v/50Hz/1ph .....	76-2938-3
c1.	Overload for compressor .....	85-0575-3
2	<b>Hot Gas Valve</b>	
a.	Hot Gas Valve including 115v Electrical Coil .....	24-0496-3
b.	Hot Gas Valve 115v Coil only .....	24-0436-3
c.	Hot Gas Valve Including 208-230v/50-60 Hz Electrical Coil .....	24-0505-3
d.	Hot Gas Valve 208-230v/50-60Hz Coil Only .....	24-0448-3
3.	High Pressure Cut-out .....	23-5543-3
4.	Expansion Valve .....	76-2939-3
5.	Expansion Valve Body Insulation Boot .....	40-0721-3
6.	Expansion Valve Bulb Insulation Boot .....	40-0720-3
7.	Manifold Strainer(in front of hot gas valve) .....	83-1016-3
8.	Access Valve .....	83-7325-3
	<b>Miscellaneous-Brackets, Screws, etc.</b>	
50	Bracket (water/electrical inlet) .....	603460-1
51	Water Inlet Female Wing Adapter .....	87-0609-3
52	Male Connector 1/4" OD x 1/8" NTPF .....	13-6096-1
53	Bin Drain Female Wing Adapter .....	87-0608-3
54	Bin Drain Tubing (molded) .....	44-2146-3
55	Bin Drain Hose Clamp (not shown) .....	56-5064-9
56	Water Inlet Tubing .375 ID .....	44-2029-1
57	Strain Relief (Electrical Cord) .....	25-0228-3
58	Clamp, Expansion Valve Bulb .....	56-5052-9
59	Screw, #10-24 x .50 .....	52-0206-9
60	Compressor Mounting Rubber Grommet .....	85-0306-9
61	Compressor Mounting Washer .....	55-7309-9
62	Compressor Hex Head Cap Screw .....	50-3770-9
63	Compressor Mounting Sleeve 3/8" ID x 1.031 .....	85-0394-9

## Q270 REFRIGERATION COMPARTMENT - AIR COOLED



Pt1291

### DESCRIPTION

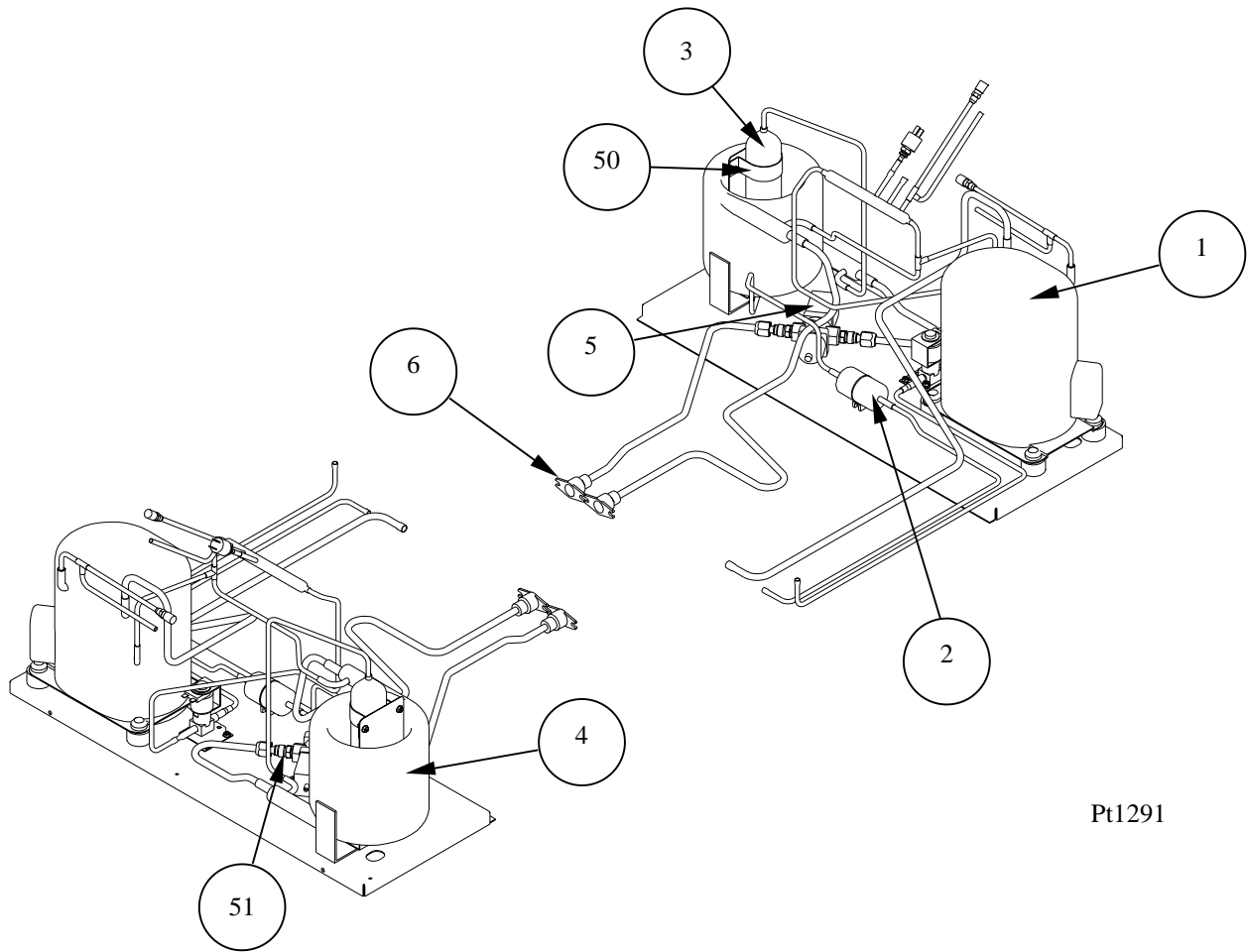
### PART NUMBER

1	Compressor (Refer to COMMON PARTS PAGE) .....	Page 1583
2	Air Condenser .....	88-5138-3
3	<b>Fan Motor</b>	
a.	115v .....	24-1281-3
b.	208-230v/60Hz or 230v/50Hz .....	24-1282-3
4	Fan blade.....	24-1622-3
5	Fan Cycling Control .....	23-5539-3
6	High Pressure Cut-out (Refer to COMMON PARTS PAGE) .....	Page 1583
7	Air Filter (Not shown) .....	76-2952-3
8	Drier .....	89-3022-9

#### Miscellaneous-Brackets, Screws, etc.

50	Fan Shroud.....	603459-1
51	Fan Motor Mounting Bracket .....	602743-1
52	Speed Nut to Mount Fan Blade (not shown).....	54-7507-9
53	Access Valve .....	83-7325-3

**Q270 REFRIGERATION COMPARTMENT - WATER COOLED**



Pt1291

**DESCRIPTION**

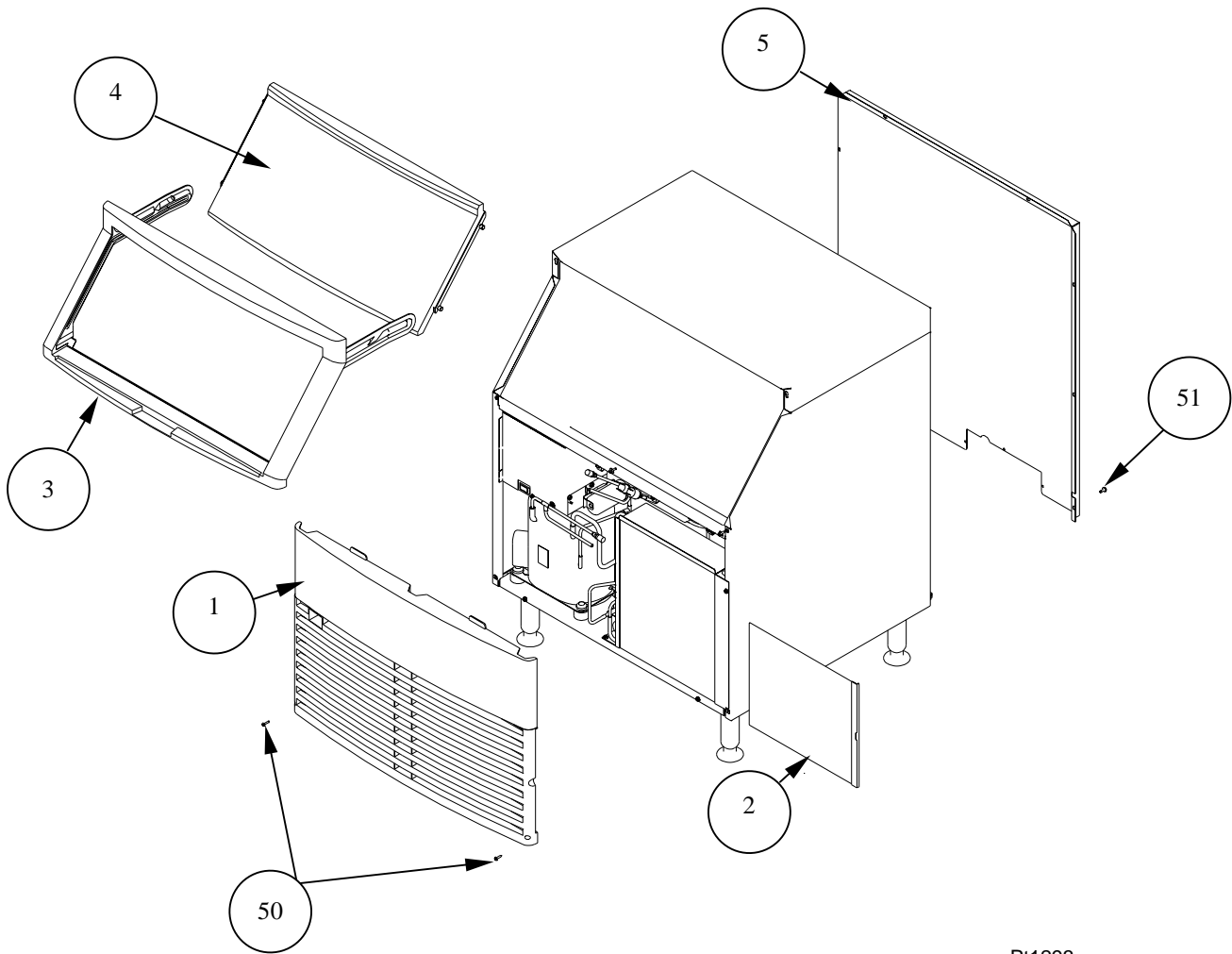
**PART NUMBER**

1	Compressor (Refer to COMMON PARTS PAGE) .....	Page 1583
2	Drier .....	89-3022-9
3	Receiver .....	12-0003-1
4	Water-cooled Condenser.....	88-6531-3
5	Water Regulating Valve.....	83-7210-3
6	Water Drain Female Wing Adapter .....	87-0610-3

**Miscellaneous-Brackets, Screws, etc.**

50	Receiver Strap.....	600189-1
51	Water Coupling.....	83-3202-3

## Q270 PANELS



Pt1293

### DESCRIPTION

### PART NUMBER

1	Front Panel Assembly .....	76-2951-3
2	Air Filter .....	76-2952-3
3	Door Frame Assembly .....	76-2953-3
4	Bin Door .....	43-0439-3
5	Back Panel, Upper .....	603467-1

### Miscellaneous-Brackets, Screws, etc.

50	Front Cover Screw .....	52-0223-9
51	Screw, #10-24 x .50 .....	52-0206-9
52	Ice Scoop (Not shown) .....	33-0260-3